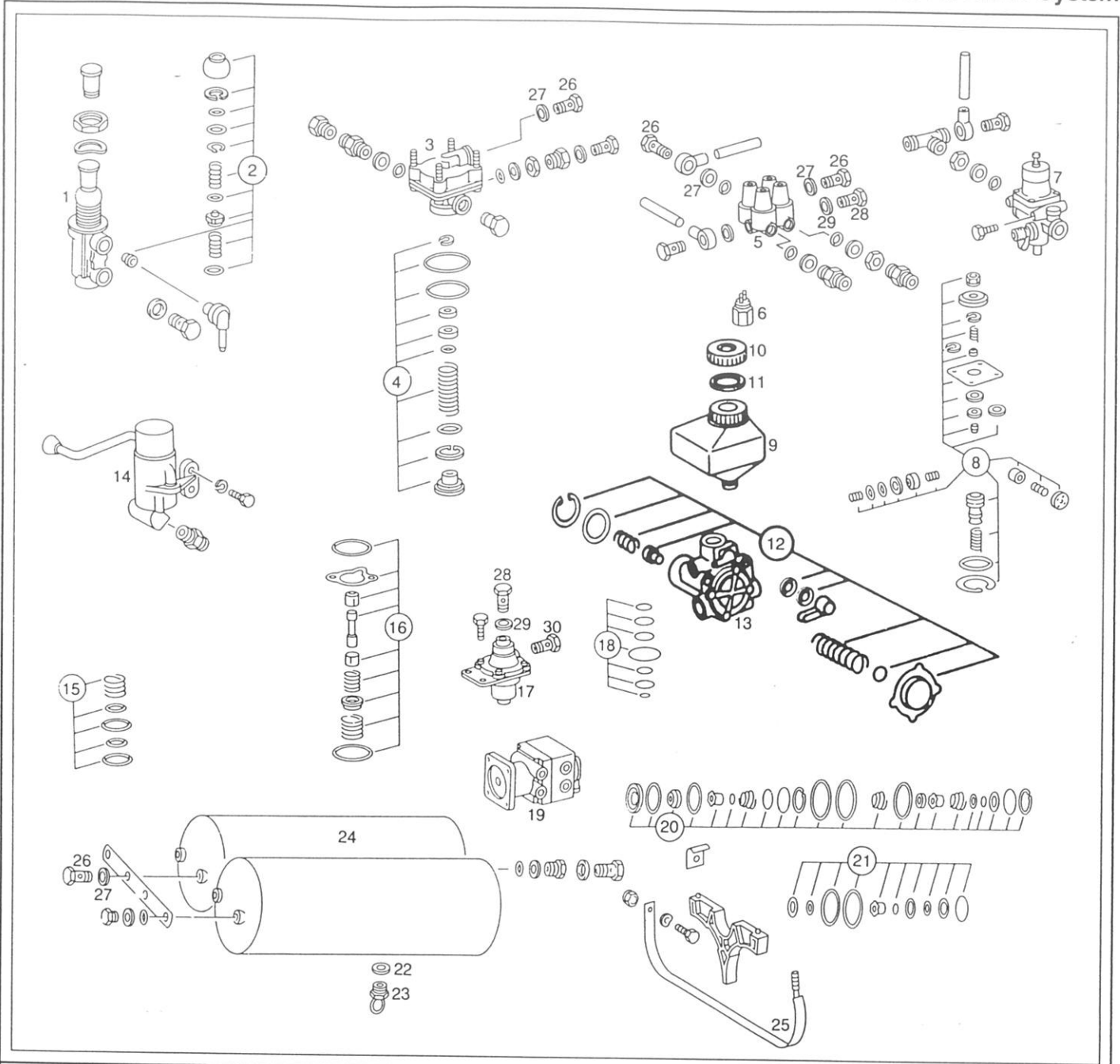


LPS/Chassis

Brakes/Group 42  
Front and Rear, Full Air, 410 System

REF. NO.	PART NUMBER	DESCRIPTION	QTY.							
										LPS1525
1	346 423 64 10	Front Brake Lining Kit, Standard 18.0mm	1	■						
1	346 423 65 10	Front Brake Lining Kit, Repair Size I, 18.8mm	1	■						
1	346 423 66 10	Front Brake Lining Kit, Repair Size II, 19.5mm	1	■						
2	307 990 01 97	Rivet	64	■						
3	307 420 03 39	Kit, Brake Shoe Roller Front and Rear	8	■						
4	345 420 00 82	Kit, Brake Anchor Front and Rear	4	■						
5	346 421 11 74	Pin, Brake Shoe Anchor	4	■						
6	307 421 05 50	Roller	4	■						
7	381 994 00 09	Lock	2	■						
8	000093 010502	Lock Plate	2	■						
9	000933 010007	Bolt	2	■						
10	385 421 03 52	Spacer Washer	8	■						
11	003 997 69 48	Seal Ring	8	■						
12	617 993 06 10	Spring, Brake Shoe Return	4	■						
13	387 421 00 74	Pin	4	■						
14	000471 012001	Lock Ring	8	■						
15	307 421 00 74	Pin	4	■						
16	000 430 47 60	Kit, Repair Brake Cylinder Front	2	■						
17	617 420 02 38	Slack Adjuster, Front	2	■						
18	<del>010 420 62 18</del>	Brake Cylinder, Left Rear	1	■						
18	<del>010 420 63 18</del>	Brake Cylinder, Right Rear	1	■						
19	364 420 00 41	Kit, Brake Camshaft Rear	2	■						
20	383 420 04 38	Slack Adjuster Left	1	■						
20	383 420 05 38	Slack Adjuster Right	1	■						

Your insistence on genuine Mercedes-Benz components ensures you will receive the highest quality part — that, in turn, is your best assurance of reduced operating costs.



REF. NO.	PART NUMBER	DESCRIPTION	QTY.						
					LPS1525				
1	000 434 21 01	Exhaust Brake Valve	1	■					
2	002 586 98 43	Repair Kit	1	■					
3	001 429 68 44	Valve, Relay	1	■					
4	000 586 57 42	Repair Kit for Relay Valve	1	■					
5	002 431 55 06	Valve, 4 Way Circuit	1	■					

# LPS/Chassis

# Brakes/Group 42 Related Parts for 410 Air Brake System

REF. NO.	PART NUMBER	DESCRIPTION	QTY.							
				LPS1525						
6	000 545 54 14	Switch for 4 Way Circuit Valve	1	■						
7	001 431 00 06	Pressure Regulator	1	■						
8	000 430 17 68	Repair Kit for Pressure Regulator Valve (Bosch)	1	■						
8	001 430 49 60	Repair Kit for Pressure Regulator Valve (Westinghouse)	1	■						
9	001 431 57 02	Reservoir, Anti Freeze Device	1	■						
10	000 431 54 33	Filler Cap	1	■						
11	000 997 29 40	Seal	1	■						
12	001 430 30 60	Repair Kit for Anti Freeze Device	1	■						
13	000 431 29 15	Anti Freeze Device	1	■						
14	001 430 95 81	Valve, Trailer	1	■						
15	000 430 21 60	Repair Kit for Trailer Valve	1	■						
16	000 430 20 60	Repair Kit for Trailer Valve	1	■						
17	000 429 54 44	Valve, Drain for Air Tank	1	■						
18	000 586 83 42	Repair Kit for Drain Valve	1	■						
19	002 431 27 05	Valve, Brake Service	1	■						
20	000 430 71 60	Repair Kit for Brake Valve	1	■						
21	001 430 12 60	Repair Kit, Minor for Brake Valve	1	■						
22	007603 014100	Seal Ring	1	■						
23	345 430 02 81	Air Drain Valve	1	■						
24	376 432 70 01	Air Tanks	2	■						
25	376 430 01 40	Strap	2	■						
26	915047 012200	Hollow Screw	2	■						
27	007603 016301	Seal Ring	3	■						
28	915036 008200	Hollow Screw	1	■						
29	007603 012111	Seal Ring	2	■						
30	915047 008200	Hollow Screw	1	■						